



PUBLIC WATER SYSTEM SURVEY

Water System Name: _____

Ownership Since (Month/Year): _____

Please answer all the questions and sign the form below.

1. What is the source of your water? _____

2. How many water hook ups does your water system have? _____

3. How many residential units are served by the water system?

The above figure is based on: Records Estimates

4. How many yearlong (at least 6 months) residents does your water system serve? _____

5. How many of *the same people* does your water system have onsite at least six months out of the year?

The above figure is based on: Records Estimates

6. How many people are onsite on an average day?

The above figure is based on: Records Estimates

7. How many days per year does your water system have at least 25 people onsite? _____

The above figure is based on: Records Estimates

8. Do people onsite have access to restrooms? _____

9. Do people onsite have access to drinking water fountains? _____

DISCLOSURE: Be advised that Sections 116725 and 116730 of the *California Health and Safety Code (CHSC)* state that any person who knowingly makes any false statement on any report or document submitted for the purpose of compliance with the *California Safe Drinking Water Act (AB 2995)* may be liable for a civil penalty not to exceed five thousand dollars (\$5,000) for each separate violation for each day that violation continues. In addition, the violators may be prosecuted in criminal court and upon conviction, be punished by a fine of not more than twenty five thousand dollars (\$25,000) for each day of violation, or be imprisoned in the county jail not to exceed one year, or both the fine and imprisonment.

Name (Print)

Title (Print)

Signature

Date

Statute 116275

NOTE: This publication includes a variety of California statutes related to the subject of drinking water, which may not be complete and should not be relied upon as the State of California's representation of the law. The published codes are the only official representation of the law. Refer to the actual published codes whenever specific citations are required. Drinking water-related regulations are in Titles 22 and 17 of the California Code of Regulations.

(3) Any water system that treats water on behalf of one or more public water systems for the purpose of rendering it safe for human consumption.

(i) "Community water system" means a public water system that serves at least 15 service connections used by yearlong residents or regularly serves at least 25 yearlong residents of the area served by the system.

(j) "Noncommunity water system" means a public water system that is not a community water system.

(k) "Nontransient noncommunity water system" means a public water system that is not a community water system and that regularly serves at least 25 of the same persons over six months per year.

(l) "Local health officer" means a local health officer appointed pursuant to Section 101000 or a local comprehensive health agency designated by the board of supervisors pursuant to Section 101275 to carry out the drinking water program.

(m) "Significant rise in the bacterial count of water" means a rise in the bacterial count of water that the state board determines, by regulation, represents an immediate danger to the health of water users.

(n) "State small water system" means a system for the provision of piped water to the public for human consumption that serves at least five, but not more than 14, service connections and does not regularly serve drinking water to more than an average of 25 individuals daily for more than 60 days out of the year.

(o) "Transient noncommunity water system" means a noncommunity water system that does not regularly serve at least 25 of the same persons over six months per year.

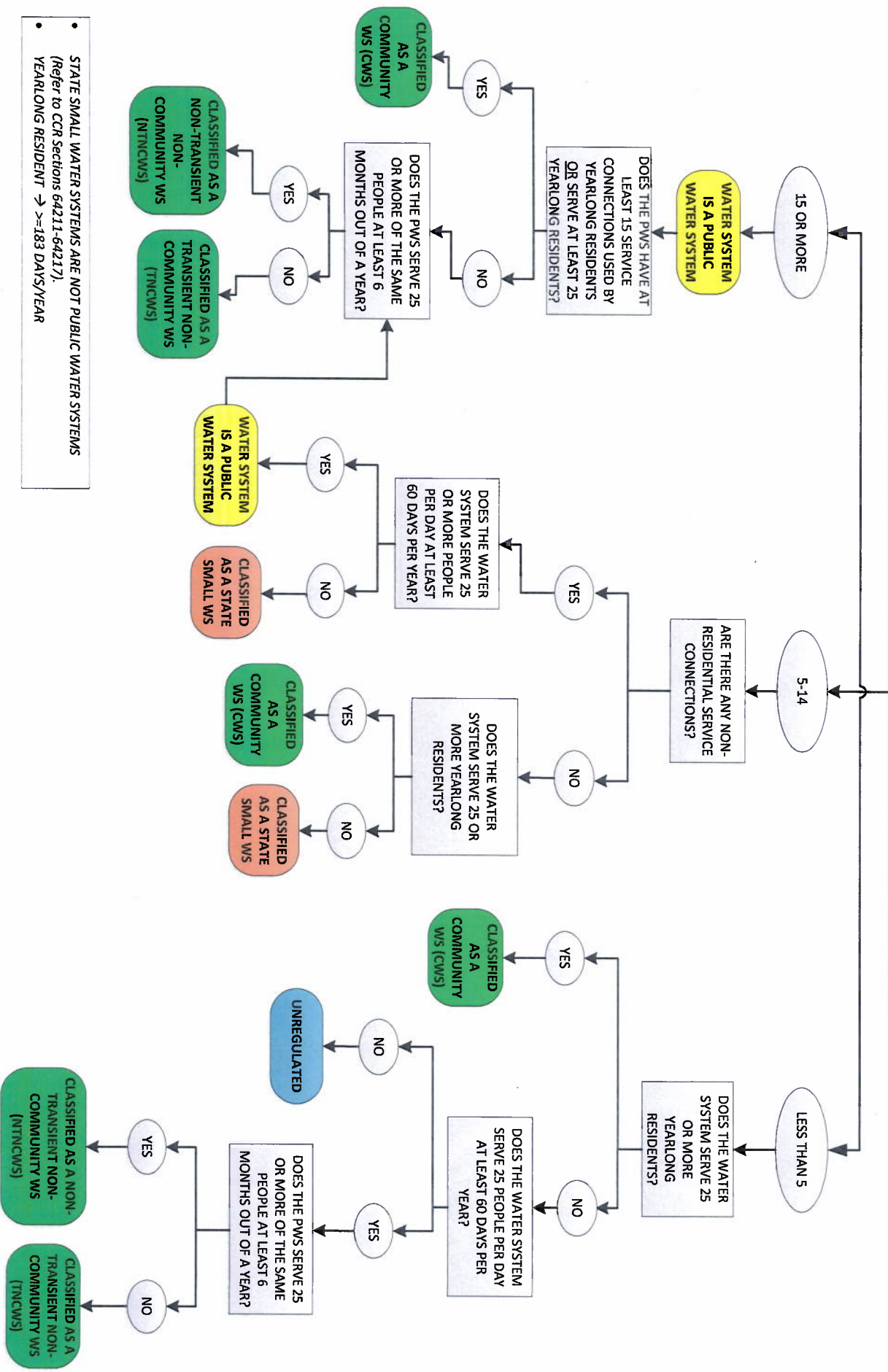
(p) "User" means a person using water for domestic purposes. User does not include a person processing, selling, or serving water or operating a public water system.

(q) "Waterworks standards" means regulations adopted by the state board entitled "California Waterworks Standards" (Chapter 16 (commencing with Section 64551) of Division 4 of Title 22 of the California Code of Regulations).

(r) "Local primacy agency" means a local health officer that has applied for and received primacy delegation pursuant to Section 116330.

DECISION TREE FOR CLASSIFICATION OF WATER SYSTEMS

HOW MANY SERVICE CONNECTIONS DOES THE WATER SYSTEM HAVE?



STATE SMALL WATER SYSTEMS ARE NOT PUBLIC WATER SYSTEMS (Refer to CCR Sections 64211-64217).
 YEARLONG RESIDENT → ≥183 DAYS/YEAR

Section 64300

NOTE: This publication is meant to be an aid to the staff of the State Board's Division of Drinking Water and cannot be relied upon by the regulated community as the State of California's representation of the law. The published codes are the only official representation of the law. Refer to the published codes—in this case, 17 CCR and 22 CCR—whenever specific citations are required. Statutes related to the State Board's drinking water-related activities are in the Health & Safety Code, the Water Code, and other codes.

TABLE 64305-A —Public Water Systems Annual Fee

Water System Type	Fee
Community Water System	
100 or fewer service connections	\$250.00 or \$6.00 per service connection, whichever is greater.
100 or fewer service connections (disadvantaged community)	\$100.00
101 to 1,000 service connections	\$6.00 per service connection
101 to 1,000 service connections (disadvantaged community)	\$100 plus \$2.00 per each service connection greater than 100
1,001 to 5,000 service connections	\$6.00 per each of first 1,000 service connections plus \$3.50 per each service connection greater than 1,000
1,001 to 5,000 service connections (disadvantaged community)	\$100 plus \$2.00 per each service connection greater than 100
5,001 to 15,000 service connections	\$6.00 per each of first 1,000 service connections plus \$3.50 per each service connection greater than 1,000 but less than 5,001 plus \$2.00 per each service connection greater than 5,000
5,001 to 15,000 service connections (disadvantaged community)	\$100 plus \$2.00 per each service connection greater than 100
15,001 or more service connections	\$6.00 per each of first 1,000 service connections plus \$3.50 per each service connection greater than 1,000 but less than 5,001 plus \$2.00 per each service connection greater than 5,000 but less than 15,001 plus \$1.35 per each service connection greater than 15,000
15,001 or more service connections (disadvantaged community)	\$100 plus \$2.00 per each service connection greater than 100 but less than 15,001 plus \$1.35 per each service connection greater than 15,000
Nontransient Noncommunity Water System	\$2.00 per person served, but not less than \$456.00.
Transient Noncommunity Water System	\$800.00.
Wholesaler	\$6,000.00 plus \$1.36 per each MG ¹

¹"Million Gallons" means the annual average, rounded to the nearest million, as reported to the State Board by the wholesaler for the three most recent years of data available, of the total gallons of water that the wholesaler produced from surface water and from groundwater and gallons of finished water that the wholesaler purchased or received from another public water system.